

DESIGNER HI AIRFLOW EXHAUST FAN

SKU# 200269, 200270

Rated Voltage 220-240V~ 50Hz

Thank you for purchasing this quality Lucci product. To ensure correct function and safety, please read and follow all instructions carefully before assembly, installation and use of this product. Please keep instructions for future reference.

Warranty

- This fan is covered by a 1 year warranty. The warranty is from date of purchase, not the date of installation.
- If the fan is not assembled and installed by a licensed electrician the warranty will be void.
- Please retain proof of purchase and evidence of assembly and installation by a licensed electrician.
- Warranty will be void if there is any damage due to improper usage or modification to the fan.
- Failure to comply with the instructions in this manual may increase the risk of damage or injury and will void warranty.

Installation requirements

- This fan must be assembled and installed by a licensed electrician.
- All wiring and installation of the light fitting must adhere to local and national wiring rules. eg. AS/NZS 3000 electrical installations.
- This product is suitable for indoor use only.
- This appliance is not intended for use by persons (including children) with reduced physical, sensory or mental capabilities, or lack of experience and knowledge, unless they have been given supervision or instruction concerning use of the appliance by a person responsible for their safety.
- Children should be supervised to ensure that they do not play with the appliance.
- The supply cord cannot be replaced. If the cord is damaged the appliance should be scrapped.
- Ensure that the fan is switched off from the supply mains before removing the guard.
- Before cutting a hole in the ceiling, check that there are no ceiling joists, etc. or electrical wiring above the desired mounting location.
- A minimum of 500mm clear space above the exhaust fan is necessary.
- If ducting is used, it should be of a diameter larger than the fan blade. Remove ceiling insulation from behind the exhaust fan.
- Where applicable, precautions must be taken to avoid the back-flow of gases into the room from the open flue of gas or other fuel-burning appliances.
- Do not install the fan in canopies over stoves, etc., as excessive heat will damage the unit.
- Take care not to pull any electrical wires during unpacking as this may damage the connection.
- Lay out all the components on a smooth surface and make sure there are no components missing before assembling. If parts are missing, return the complete product to the place of purchase for inspection or replacement.
- Check whether the fitting has been damaged during transport. Do not operate/install any product which appears damaged in any way. Return the complete product to the place of purchase for inspection, repair or replacement.
- Ensure power to the circuit you are working on has been switched OFF.

Installation directions

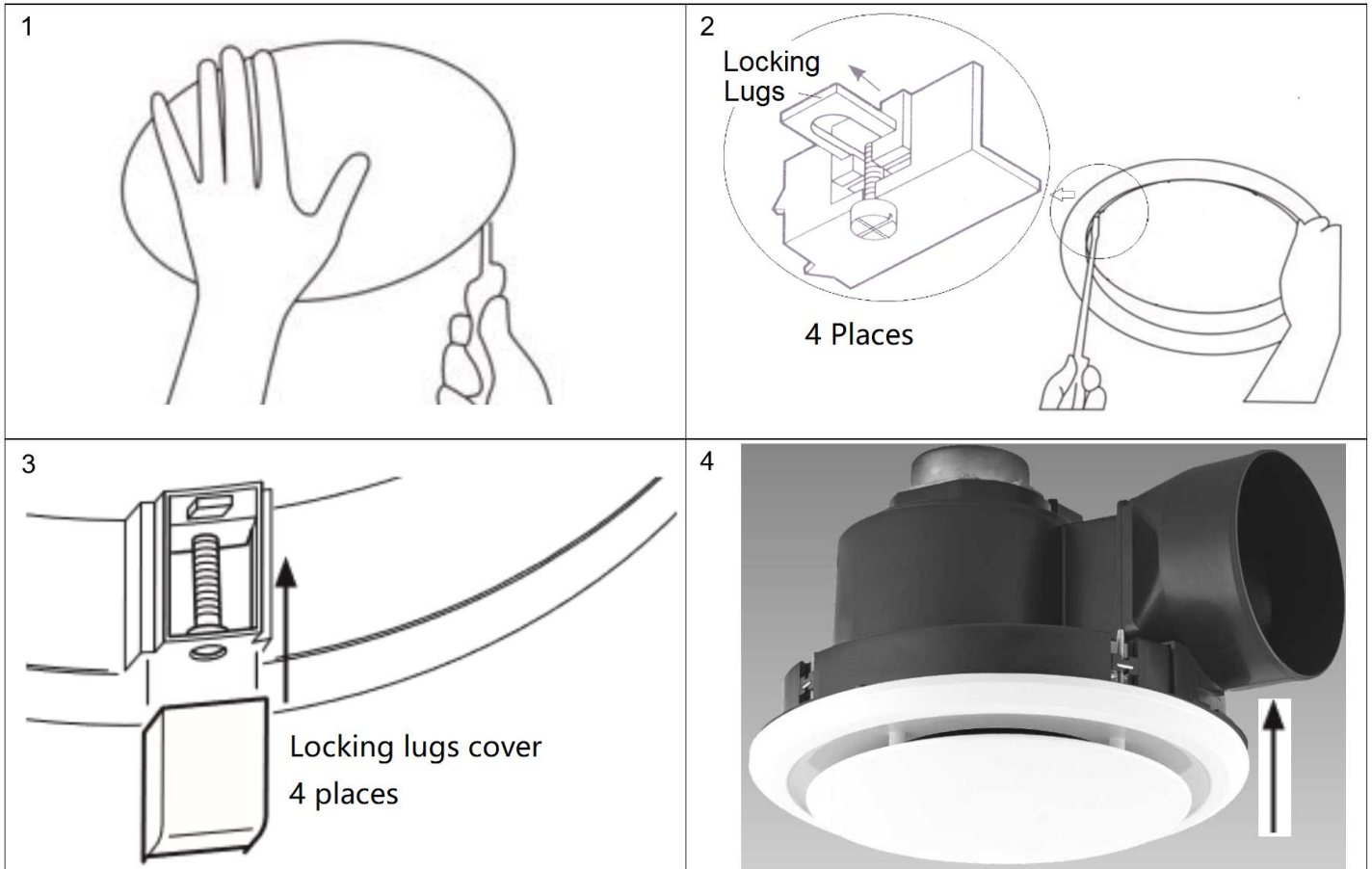
Remove all packaging material from the product and be careful not to throw away accessories that may be hidden within the packaging material.

NOTE: Before installation, plug the fitting into a socket outlet to ensure the product is working correctly.

1. Cut an installation hole into the ceiling according to the specification section. (Fig.1).
2. Remove the fascia from the exhaust fan body by unclipping the springs.
3. Push the four locking lugs to the centre of the exhaust fan body and insert the fan body into the cutting hole.

Installation Instructions

4. Push the four locking lugs out of the exhaust fan body to hold the exhaust fan body onto the ceiling. (Fig. 2)
5. Use a screwdriver to move the locking lugs along the thread to secure the exhaust fan onto the ceiling. (Fig. 2)
6. Insert the locking lugs cover to prevent the locking lugs from moving back to the centre of the fan body. (Fig.3)
7. Reinstall the fascia back onto the exhaust fan body. (Fig.4)
8. Insert the plug into the mains socket outlet and switch on the power to test the exhaust fan.



Safety tips

- Always ensure the power is OFF and the fan has cooled down before performing any maintenance, cleaning or making any adjustment to the fan.
- Ensure that the fan does not come in contact with corrosive chemicals solvents or abrasive cleaners etc.
- To clean, wipe with a damp clean cloth. Do NOT soak or immerse the product in water or other liquids.

Specifications

SKU #	200269	200270
Colour	White	
Rated Voltage	220-240Vac	
Fan Rated Wattage	32W	35W
Cutout Size	Φ240mm	Φ290mm
Dimensions	H:217mm x Dia:270mm	H:220mm x Dia:330mm
Fan Tube Diameter	Φ100mm	Φ150mm
Weight	1.71kg	2.13kg

LUCCI

BATHROOM EXHAUST WARRANTY CARD

Our goods come with guarantees that cannot be excluded under the Australian Consumer Law. You are entitled to a replacement or refund for a major failure and compensation for any other reasonably foreseeable loss or damage. You are also entitled to have the goods repaired or replaced if the goods fail to be of acceptable quality and the failure does not amount to a major failure.

Every Lucci Air Designer Exhaust Fan is thoroughly inspected and tested before being released for sale. In addition to any warranties or conditions implied by applicable Statute or Regulation, Lucci Design warrants all of its bathroom heaters against defective workmanship and faulty materials for twelve (12) months from the original date of purchase. Lucci Design undertakes, at its option, to repair or replace, free of charge, each product or part thereof subject to the below warranty conditions;

- 1) The fan or relevant part has not been modified, subjected to misuse, neglect, or been involved in an accident.
- 2) The repairs are not required as a result of normal wear and tear.
- 3) The product was installed by a licenced electrical contractor in accordance with this instruction manual.
- 4) No solid state speed control device has been used with the appliance.
- 5) A copy of the original receipt of purchase is presented.
- 6) Globes supplied are not covered by this warranty

Lucci Design cannot be held responsible for any repair other than those carried out by it or one of its Authorised Service Agents. Please keep this warranty form in a safe place. This form must be produced in the event of service being required.

IN THE EVENT OF SERVICE BEING REQUIRED, PLEASE CALL THE LUCCI FAN WARRANTY HOTLINE ON 1800 602 243 BETWEEN 9AM & 5PM (E.S.T) MONDAY TO FRIDAY ENSURING THAT YOU

HAVE THE FOLLOWING DETAILS ON HAND:

MODEL (SKU) NUMBER: _____

DATE OF PURCHASE: _____

RETAILER: _____

RECEIPT NUMBER: _____

INSTALLED BY: _____

LICENCE # : _____ PH: _____

DESCRIPTION OF FAULT: _____
