

MARINE LED 1LT ADJUSTABLE WALL SPOT

SKU#231201, 231204, 231207, 231210

Rated Voltage 220-240V~ 50Hz

Thank you for purchasing this quality Lucci product. To ensure correct function and safety, please read and follow all instructions carefully before using the product. Please keep instructions for future reference.

Warranty

- This light fitting is covered by a 3 year warranty. The warranty is from date of purchase, not the date of installation. Please retain proof of purchase and evidence of installation by a licensed electrician.
- Warranty will be void if there is any damage due to improper usage or modification to the fitting.
- This light fitting is not suitable for use with dimmer switches. Warranty will be void if the fitting is used on the same circuit which has a dimmer switch.
- Failure to comply with the instructions in this manual may increase the risk of damage or injury and will void warranty.

Installation requirements

- Must be installed by a licensed electrician.
- All wiring and installation of the light fitting must adhere to local and national wiring rules. eg. AS/NZS 3000:2007/Amendment 2:2012 Electrical installations.
- This fitting is not suitable for use with dimmer switches and should not be used on a circuit which has a dimmer.
- This fitting is rated IP65. This must be maintained during installation.
- Replace any cracked protective lamp shade to maintain IP rating when using this fitting.
- Select a suitable location for installation:
 - This fitting is rated IP65 which is protected against jets of water.
 - The wiring kit is not suitable for underground installation without protection from water or damp conditions. It is not designed to be immersed in water.
- Take care not to pull any electrical wires during unpacking as this may damage the connection.
- Lay out all the components on a smooth surface and make sure there are no components missing before assembling. If parts are missing, return the complete product to the place of purchase for inspection or replacement.
- Check whether the fitting has been damaged during transport. Do not operate/install any product which appears damaged in any way. Return the complete product to the place of purchase for inspection, repair or replacement.
- Ensure power to the circuit you are working on has been switched OFF, before commencing any electrical work.

Installation directions

1. Remove all packaging material from the fitting.
2. Turn OFF the power to the fitting. Fig.1
3. Remove the mounting bracket from the lamp base. Use the mounting bracket as a template to mark the position of the holes on the wall.
4. Drill holes into the wall and insert the plastic anchors into the hole. Ensure the anchors used are suitable for the installation surface. Fig.2
5. Secure the mounting bracket onto the wall with screws provided. Ensure the screws used are suitable for the mounting surface. Fig. 3.
6. Connect the mains supply wire to the light fitting using the terminal block provided. Ensure that the wires are secure and no bare wires are exposed. Fig. 4

Mains Supply Wire

Earth – Yellow/Green

Neutral – Blue or Black

Live – Brown or Red

Fitting Wire

Yellow/Green or

Blue N

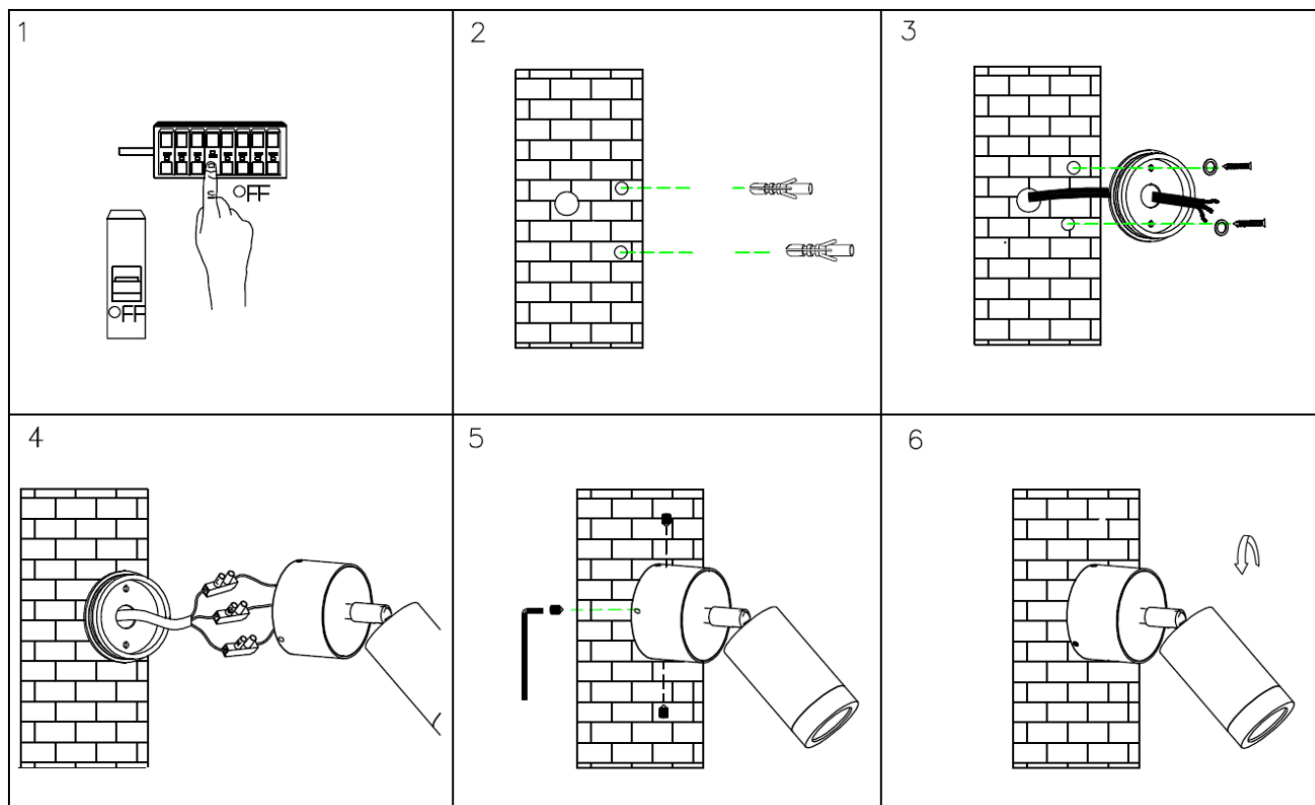
Brown L

7. Secure the lamp body to the mounting bracket by tightening the screws on the side with the allen key provided.

Fig. 5

8. Adjust the LED head to your preferred angle. Fig. 6

9. Turn ON the power to the fitting.



Safety tips

- Always ensure the power is OFF and the fitting has cooled down before performing any maintenance, cleaning or adjustment to the fitting.
- To avoid injury or damage to the fitting, ensure that power leads and screws are secure before connecting the power.
- Ensure that the fitting does not come in contact with corrosive chemicals, etc.
- To clean, wipe with a damp clean cloth. Never soak the fitting with water.

Specifications

SKU #	231201	231204	231207	231210
Color	Copper	Black	316 Stainless Steel	Aluminium
Rated Voltage	240V~, 50Hz			
Rated Wattage	9W			
LED	Yangtze LEDS, 3200K, 500lm			
IP Rating	IP65			
Weight	0.67kg	0.62kg	0.88kg	0.62kg
Dimensions	H:160mm W:160mm E: 206mm Max.			