

LEDLUX BOUNTY ROUND BUNKER

SKU# 231020, 231021, 231022, 231023, 231024, 231025, 231026, 231027, 231028

Rated Voltage 220-240V~ 50Hz

Thank you for purchasing this quality Lucci product. To ensure correct function and safety, please read and follow all instructions carefully before using the product. Please keep instructions for future reference.

Warranty

- This light fitting is covered by a 3 year warranty. Please retain proof of purchase and evidence of installation by a licensed electrician.
- Warranty will be void if there is any damage due to improper usage or modification to the fitting.
- This light fitting is not suitable for use with dimmer switches. Warranty will be void if the fitting is used on the same circuit which has a dimmer switch.

Installation requirements

- Must be installed by a licensed electrician.
- All wiring and installation of the light fitting must adhere to local and national wiring rules. eg. AS/NZS 3000:2007/Amendment 2:2012 Electrical installations.
- This is a CLASS I fitting and must be earthed during installation. The input power cord must be H05RN-F 3G type, diameter between Ø 6.4mm- Ø 7mm.
- This fitting is rated IP54 which is protected against splashes of water, this must be maintained during installation.
- This fitting is not suitable for use with dimmer switches and should not be used with a circuit which has a dimmer.
- Select a suitable location for installation, the mounting point must support 2 times the weight of the fitting.
- Take care not to pull any electrical wires during unpacking as this may damage the connection.
- Lay out all the components on a smooth surface and make sure there are no components missing before assembling. If parts are missing, return the complete product to the place of purchase for inspection or replacement.
- Check whether the fitting has been damaged during transport. Do not operate/install any product which appears damaged in any way. Return the complete product to the place of purchase for inspection, repair or replacement.


Installation directions

1. Ensure power to the circuit you are working on has been switched OFF before commencing any electrical work. (Fig.2)
2. Remove all packaging material from the fitting.
3. Remove the lamp shade from lamp base by loosening the screws.
4. Use the lamp base as a template to mark the screw positions onto the wall. Drill holes into the wall and push plastic anchors into the holes. (Fig. 3)
5. Install the fitting onto the wall by using the mounting screws and rubber rings provided. Check and ensure that the anchors and mounting screws are suitable for the mounting surface. (Fig. 4)
6. Connect the earth and mains supply wire to the terminal block. Ensure that the wires are secure and no bare wires are exposed. (Fig. 5)

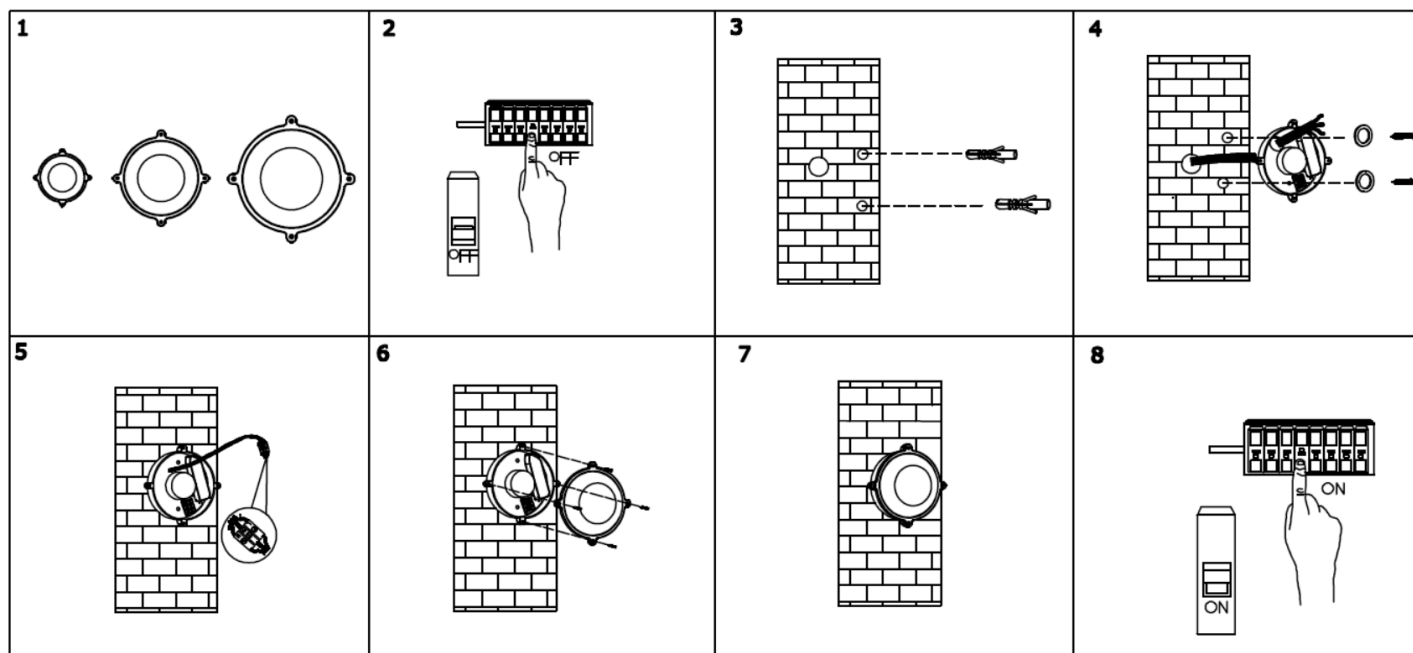
Mains Supply Wire

Earth – Yellow/Green
Neutral – Blue or Black
Live – Brown or Red

Fitting Wire

Yellow/Green 
Blue
Brown

7. Install the lamp shade onto the lamp base by securing the screws. (Fig. 6)



Safety tips

- Always ensure the power is OFF and the fitting has cooled down before performing any maintenance, cleaning or adjustment to the fitting.
- To avoid injury or damage to the fitting, ensure that power leads and screws are secure before connecting the power.
- Ensure that the fitting does not come in contact with corrosive chemicals, etc.
- To clean, wipe with a damp clean cloth. Never soak the fitting with water.

Specifications

SKU #	231020, 231021, 231022	231023, 231024, 231025	231026, 231027, 231028
Insulation Class	Class I		
Rated Voltage	220-240V~ 50Hz		
Rated Wattage	7W	12W	21W
LEDs	Hangke LEDs, 4000K, 350lm	Hangke LEDs, 4000K, 700lm	Hangke LEDs, 4000K, 1200lm
Weight	0.375kg	0.54kg	1kg
Dimensions	D:153mm H:60mm	D:190mm H:68mm	D:245mm H:77mm
IP Rating	IP54		