

LEDLUX MAXI II / MINI II SQUARE STEP LIGHT

SKU# 220940, 220942, 220944, 220946

Rated Voltage 220-240V~ 50Hz

Thank you for purchasing this quality Lucci product. To ensure correct function and safety, please read and follow all instructions carefully before using the product. Please keep instructions for future reference.

Warranty

- This light fitting is covered by a 3 year warranty. Please retain proof of purchase and evidence of installation by a licensed electrician.
- Warranty will be void if there is any damage due to improper usage or modification to the fitting.
- This light fitting is not suitable for use with dimmer switches. Warranty will be void if the fitting is used on the same circuit which has a dimmer switch.

Installation requirements

- Must be installed by a licensed electrician.
- All wiring and installation of the light fitting must adhere to local and national wiring rules. eg. AS/NZS 3000:2007/Amendment 2:2012 Electrical installations.
- This is a CLASS I fitting and must be earthed during installation.
- This fitting is rated IP55 which is protected against jets of water, this must be maintained during installation.
- This fitting is not suitable for use with dimmer switches and should not be used with a circuit which has a dimmer.
- Select a suitable location for installation, the mounting point must support 2 times the weight of the fitting
- Take care not to pull any electrical wires during unpacking as this may damage the connection.
- **The external flexible cable or cord of this luminaire cannot be replaced; if the cord is damaged, the luminaire shall be destroyed.**
- Lay out all the components on a smooth surface and make sure there are no components missing before assembling. If parts are missing, return the complete product to the place of purchase for inspection or replacement.
- **Check whether the fitting has been damaged during transport. Do not operate/install any product which appears damaged in any way. Return the complete product to the place of purchase for inspection, repair or replacement.**
- Ensure power to the circuit you are working on has been switched OFF, before commencing any electrical work.

Installation directions

1. Remove all packaging material from the fitting.
2. Take out the plastic mould from the back of the fitting. (figure 4)
3. Remove the frame from fitting by loosening the two allen key screws. (figure 4)
4. The cut out size for the plastic mounting bracket is as following specification. Cut the hole and secure the plastic mounting bracket into the installation area. (figure 5)
5. **Connect the earth and mains supply wire to the fitting using a waterproof terminal block/junction box (not included). (figure 7)**

Mains Supply Wire

Earth – Yellow/Green

Neutral – Blue or Black

Live – Brown or Red

Fitting Wire

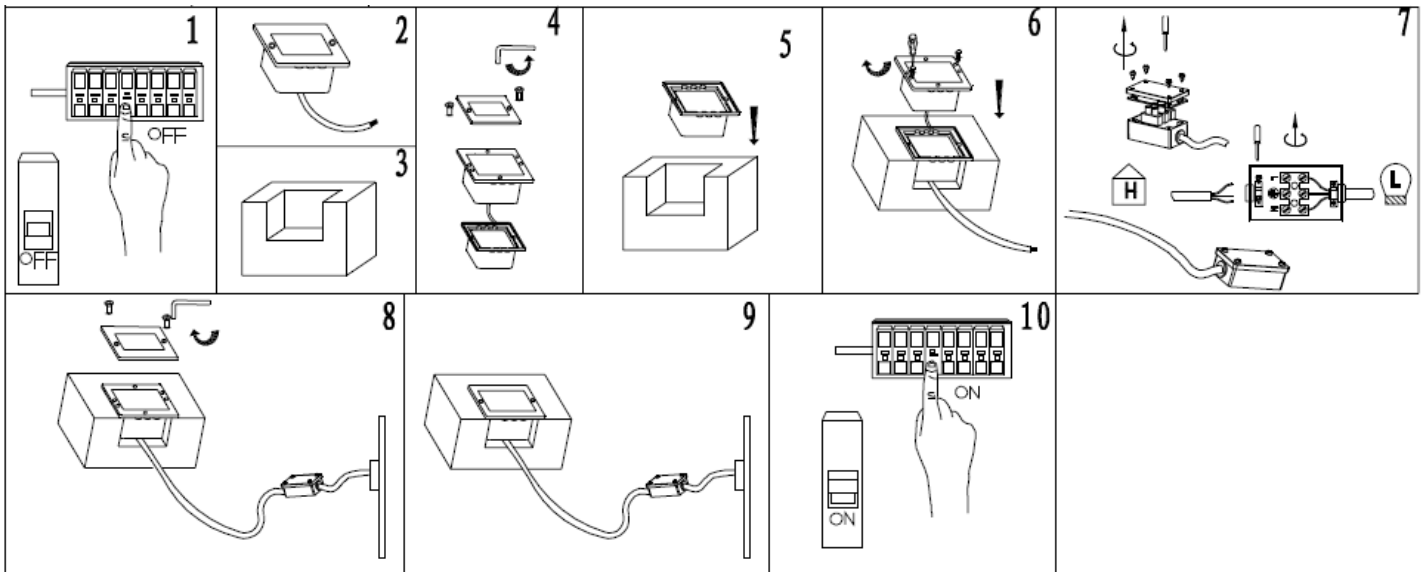
Yellow/Green

Blue

Brown

6. Ensure the wires are secure and no bare wires are exposed.

7. Install the fitting on the plastic mould by two screws. (figure 6)
8. Secure back the metal frame on the fitting using the two allen key screws. (figure 8)
9. Turn the power back on to the circuit you are working on. (figure 10)



Safety tips

- Always ensure the power is OFF and the fitting has cooled down before performing any maintenance, cleaning or adjustment to the fitting.
- To avoid injury or damage to the fitting, ensure that power leads and screws are secure before connecting the power.
- Ensure that the fitting does not come in contact with corrosive chemicals, etc.
- To clean, wipe with a damp clean cloth. Never soak the fitting with water.

Specifications

SKU #	220940	220942	220944	220946
Model #	GL021-316	GL021-304	GL022-316	GL022-304
Rated Voltage	220-240V~ 50Hz			
Rated Wattage	3W		2.4W	
LED	4000K, 110 lumens		4000K, 70 lumens	
IP Rating	IP55		IP55	
Weight	0.3kg		0.16kg	
Cut Out Size	100mm x 100mm		68mm x 68mm	
Dimensions	E:58MM*W:105MM*H:105MM		E:58MM*W:70MM*H:70MM	