

LEDLUX APB

SKU# 189064,189065

Rated Voltage 220-240V~ 50Hz

Thank you for purchasing this quality Lucci product. To ensure correct function and safety, please read and follow all instructions carefully before using the product. Please keep instructions for future reference.

Warranty

- This light fitting is covered by a 3 year warranty. Please retain proof of purchase and evidence of installation by a licensed electrician.
- Warranty will be void if there is any damage due to improper usage or modification to the fitting.
- This light fitting is not suitable for use with dimmer switches. Warranty will be void if the fitting is used on the same circuit which has a dimmer switch.

Installation requirements

- Must be installed by a licensed electrician.
- All wiring and installation of the light fitting must adhere to local and national wiring rules. eg. AS/NZS 3000:2007/Amendment 2:2012 Electrical installations.
- This is a CLASS I fitting and must be earthed during installation.
- This fitting is not suitable for use with dimmer switches and should not be used with a circuit which has a dimmer.
- Select a suitable location for installation, the mounting point must support 2 times the weight of the fitting.
- Take care not to pull any electrical wires during unpacking as this may damage the connection.
- Lay out all the components on a smooth surface and make sure there are no components missing before assembling. If parts are missing, return the complete product to the place of purchase for inspection or replacement.
- Check whether the fitting has been damaged during transport. Do not operate/install any product which appears damaged in any way. Return the complete product to the place of purchase for inspection, repair or replacement.
- Ensure power to the circuit you are working on has been switched OFF, before commencing any electrical work.


Installation directions

1. Remove all packaging material from the fitting.
2. Remove the end covers from **the** fitting by loosening the screws. (figure 1)
3. Use the fitting as a template to mark the screw positions on the wall **and drill the holes into the wall**. (figure 2)
4. Install the fitting onto the **wall using** appropriately sized mounting screws. Ensure the screws used are suitable for the mounting surface. (figure 2, 3)
5. Feed the mains supply wire through the lamp base hole, and connect the main supply wire to the terminal block as following: (figure 3)

Mains Supply Wire

Earth – Yellow/Green
Neutral – Blue or Black
Live – Brown or Red

Fitting Wire

Yellow/Green 
Blue
Brown

6. **Ensure wires** are secure and no bare wires are exposed.
7. Reposition the end covers by **re-tightening** the screws. (figure 4)
8. **Turn the power back on to the circuit.**

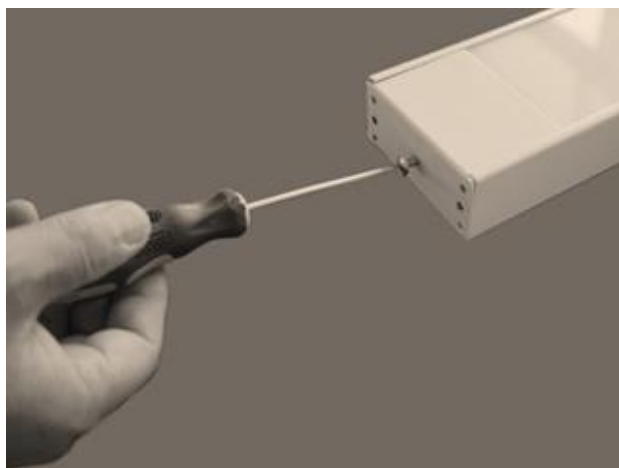


Figure 1

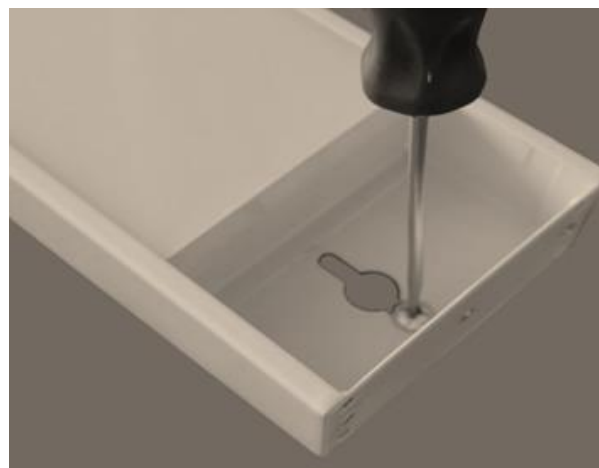


Figure 2



Figure 3

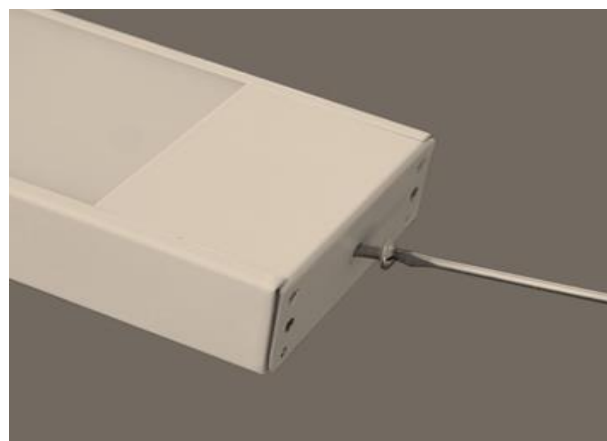


Figure 4

Safety tips

- Always ensure the power is OFF and the fitting has cooled down before performing any maintenance, cleaning or adjustment to the fitting.
- To avoid injury or damage to the fitting, ensure that power leads and screws are secure before connecting the power.
- Ensure that the fitting does not come in contact with corrosive chemicals, etc.
- To clean, wipe with a damp clean cloth. Never soak the fitting with water.

Specifications

SKU #	189064	189065
Model #	JF-LED213C-32w	JF-LED223C-48w
Rated Voltage	220-240V~ 50Hz	
Rated Wattage	32W	48W
LED	4000K, 2300 lumens	4000K, 3400 lumens
Weight	1.5kg	1.7kg
IP Rating	IP20	IP20
Dimensions	L:1200 W:80 H:35MM	L:1200 W:100 H:35MM